



OCTOBER 2019

FOLLOW US



(866)-NJSMART | YOUR POWER TO SAVE

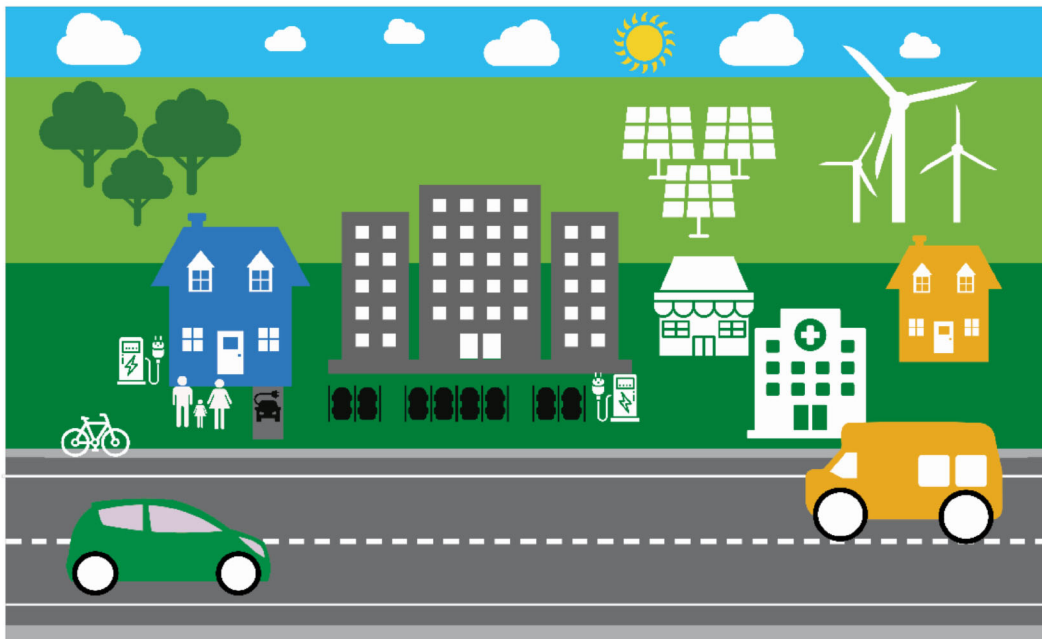
Join the thousands of New Jersey homeowners, businesses, and municipalities that have taken advantage of incentives offered by *New Jersey's Clean Energy Program™*. The program provides opportunities for you to save energy, money and help protect our climate and shorelines.

**\$\$\$ Check Out the Latest List of Rebates and Promotions
\$\$\$**

OVER \$200 MILLION IN DIRECT INSTALL INCENTIVES AWARDED

Have you gotten one? This summer the Direct Install program surpassed \$200 million in incentives provided since its inception. The Direct Install Program is a turnkey process, utilizing a network of selected participating contractors who handle the details of the project from start to finish. The process starts with a facility assessment and ends with the installation of eligible energy efficient equipment. The Direct Install Program is a comprehensive program, focused on providing each participant with the largest possible assortment of energy efficiency measures per project that are cost effective and provide the greatest return on investment. Providing up to 70% in direct rebates these programs can help residents, schools, municipalities and businesses to install energy efficiency measures, saving them money all year long. Effective July 1, 2019, facilities owned or operated by municipalities, K-12 public schools, and customers located in Urban Enterprise Zones or Opportunity Zones may be eligible for **up to 80%** of the cost of the installed measures. Learn more about how to get involved in this great program at www.NJCleanEnergy.com/DI.

COMMUNITY ENERGY GRANTS



A Community Energy Plan (CEP) is a way for a community to work together towards a better environment for all residents. By using the state's Energy Master Plan (EMP) as a guide to develop goals and strategies to increase clean energy production, reduce energy use and harmful emissions, and develop sustainable strategies.

The Community Energy Plan is created through a task force comprised of government officials, businesses and residents working to first benchmark community energy use and production and then developing goals and timelines to work towards the state's EMP goals.

The New Jersey Board of Public Utilities (NJBPU) has created a grant to help you start the process and to implement your Community Energy Plan. The first step is to create a task force to write the plan. When creating the task force you want to make sure you include a diverse snapshot of your community including government, schools, businesses, large institutions, small businesses, transportation operators, residents, and local nonprofits.

The task force will first establish benchmarks for energy consumption, energy generation, emissions, vehicle miles traveled and any other relevant data. Those benchmarks will help determine how much work needs to be done and what the community's priorities will be.

From there the task force can establish milestones designed to hit the EMP's long-term goals and can detail options for how to get there. Those goals, milestones, and strategies will be the basis of the Community Energy Plan.

Find out more about Community Energy Planning grants [here](#).

DON'T MISS NEW JERSEY'S CLEAN ENERGY PROGRAM IN ATLANTIC CITY

New Jersey's Clean Energy Program will be busy getting the word out to schools and municipalities this Fall. Whether you are attending the School Board's conference, the NJEA's conference or the League of Municipalities, make sure to stop by the Clean Energy booth to learn about all the great incentive programs you can take advantage of. Don't forget to spin the wheel to take home a great prize!

Make an appointment during the League of Municipalities Conference to talk to our team about how we can help your organization save energy. Call (732) 425 - 5152 to schedule a 20-minute appointment at our booth. You can also stop by anytime during the League of Municipalities Conference at booths 1429 and 1427.

FOLLOW US

